

VICMOW

CLUB AND RACING RULES

Updated August 1 2018

PREAMBLE WITHOUT PREJUDICE

The Victorian Mower Racing Association (VICMOW) is a non-profit, family friendly organisation providing racers, their families and friends the opportunity to be involved with competitive lawn mower racing that is fun, friendly and affordable, whilst helping raise valuable funds for Community groups and Organisations.

Members race for the love of competition in a cheap affordable sport. All who share this philosophy are welcome to join VICMOW and participate in its activities.

These rules provide the standards that regulate the operations within VICMOW. While the information contained within these rules will provide acceptable guidelines for being involved with VICMOW, this document does not guarantee the safety of the driver or others around him/her. These regulations should not serve as a substitute for the extreme caution that should be maintained when interacting with machines of this calibre. Participation in VICMOW sanctioned events provides the implication that the driver, his/her pit crew, guests and volunteers will abide by the rules listed herein as well as any additional necessary amendments to this document.

A lot of time, money, and energy have been spent on mower fabrication, engine building, and travelling to and from race venues. Keep that in mind when racing and race clean and safe. Although mishaps will happen from time to time on the track, let's look out for each other and keep ourselves and our mowers in the same conditions when we started the race as when we leave. Let's keep this sport what it was meant to be- FUN.

VICMOW assumes no liability for any injury, psychological trauma, death or property loss or damage, and all participants shall execute a release of liability discharging VICMOW from such liability. By entering and participating in events, all participants agree to abide by these Rules which may be amended from time to time.

The Committee of the Association, having promulgated these Rules, may modify, add to, delete from or grant exceptions to these Rules at any time for safety reasons in accordance with the relevant applicable legislation and constitution.

Of paramount importance to all organisers, competitors, officials, spectators, and any other person whomsoever attending any event shall be the safety of those persons. These Rules should be read and interpreted with this in mind.

The spirit of fun friendly competition is to be maintained at all times
Bending or breaking the rules makes it awkward for everyone involved furthermore
you end up with the embarrassment of disqualification.

PLEASE DON'T DO IT

VICMOW

Let us all remember that we should strive to maintain professionalism in our appearance and conduct, and we aim to keep participation fun, affordable, safe and competitive. For those who wish to spend time seeking loopholes in the rules, or defeat the spirit of the rules; we suggest you are racing in the wrong organisation.

Purposes:

The main purpose of these Rules is:

1. To provide for the safe conduct of lawn mower racing; and provide the standards that regulates the operations within VICMOW.
2. To provide specifications for racing lawn mowers in each category as may be amended for safety reasons
3. To provide a safe environment for all persons attending events; and
4. To provide the opportunity to get involved with competitive racing that is safe, fun, family friendly and affordable
5. To provide a code of conduct for all VICMOW social media users.

Commencement:

These Rules shall come into operation on **January 5 2015** having been approved for commencement by a majority vote of financial members present at the committee meeting convened for that purpose and in accordance with the Constitution of the Victorian Mower Racing Association and the provisions of the Associations Incorporation Reform Act 2012. .

Definitions:

In these Rules –

“Association or VICMOW means Victorian Mower Racing Association.

“Driver/Racer” means a competitor in any event that has been approved to race

“Day Racer “ means a driver for that day **only** with committee approval and by Invitation only

“Event” includes any competition practice or demonstration event

“Helmet” means a full face or motor-cross style motorcycle rider`s helmet **only** which complies with Australian Standards AS1698

“Intoxication” includes being affected by intoxicating liquor or drug, prohibited substance or illegal drugs. This also includes anyone impaired by prescribed medications.

“Model Rules” means the Constitution of the Victorian Mower Racing Association (VicMow) as prescribed in s.21 of the Associations Incorporation Reform Act 2012. .

VICMOW

“Motor” in these Rules means an internal combustion engine naturally aspirated by any fuel permitted by these Rules

“Regulations” includes rules

“Restricted Driver” includes—

- a) A driver who has not reached the age of 18 years; or
- b) A driver of any age who, in the opinion of VICMOW officials, is required to undergo a test for ability and competence before being permitted to participate in any event

“Unrestricted driver” in these Rules, is a driver over the age of 18 years.

“Rules” includes regulations

“Ride on Lawn Mower” means a motor driven vehicle which has been specifically designed and sold commercially for mowing residential type lawns, this does not include small tractors, quad bikes, buggies, go carts etc.

“Pit Crew” means guests of the driver who are required to assist the driver in the preparation, repair etc., of the vehicle and/or who are permitted to enter and remain in the pit area.

“Grid” means starting line

“Pit area” means a separate area set aside for drivers and/or pit crew to perform any works on mowers, refueling operations, or the performance of dangerous tasks including the use of welders, power tools and similar operations.

“Guest Pit pass” means a pit pass that must be issued by a Committee member

“Steward or Marshall” means an official or person assigned the task of supervising behavior and other matters in the pit, track areas.

“Track area” means track and includes the racetrack and surrounding area to any external boundaries, which have been clearly defined as an area prohibited for access by unauthorized persons.

“Unauthorised persons” include any persons not wearing a high visibility vest

INDEX:

Section 1 – Driver Eligibility	Page 4
Section 2 – Driver Equipment	Page 5
Section 3 – Pit and Track Areas	Page 6
Section 4 – Technical inspections	Page 7
Section 5 – General Provisions	Page 8
Section 6 – Procedures	Page 9
Section 7 – Memberships	Page 10
Section 8 – Mower Construction	Page 11
Section 9 – VicMow Code of Conduct	Page 17
Section 10 – VicMow Club Member	Page 19

VICMOW

RACING RULES.

Section 1- Driver Eligibility:

- a) Drivers must be approved to race by VICMOW Victorian Mower Racing Association.
- b) A one day race permit may be granted on committee approval. This is not a membership, but a permit to race for one day **only**.
- c) Drivers under 18 years of age must have an approved minor release form signed by their Parent or Legal Guardian and be accompanied by an adult
- d) All drivers must sign a release discharging VICMOW from liability.
- e) Drivers should conduct themselves in a professional, mature manner at all times. Failure to do so will result in removal from the remainder of the days racing action. If a driver feels there is an issue requiring attention, he/she will bring the issue to the Drivers Advocate in an appropriate manner for a resolution.

Minimum age for unrestricted drivers:

The minimum age for unrestricted driver is 18 years. Drivers aged between 16 years and 18 years are eligible to race in C Class **only**. Once a driver has reached the age of 18 years, they will become eligible for A Class and B Class. Proof of age required

Restrictions apply to restricted drivers:

Any restricted driver, who has obtained and produced a properly completed “Minor’s Release Form” and who has also produced a properly completed “Release from Liability” document in its current form—

- a) May request that the VICMOW Officials grant his or her admission into a relevant class event; and
- b) May need to demonstrate an understanding of the flags and a competence in handling a racing lawn mower.

A restricted driver can also include a driver of any age, who before being permitted to participate in any event, must demonstrate to VICMOW Officials, that he/she is competent in the handling of their mower, in race conditions.

Permission required for drivers under 18 years:

All drivers under the age of 18 years must produce a written and signed “Minor Release” form granting permission from a parent or Legal Guardian to participate or assist in any event. Minors must also be accompanied by an adult.

Driver to sign release form liability:

All drivers before being eligible to participate in any event shall sign and submit a release or indemnity in the prescribed form discharging VICMOW (Victorian Mower Racing Association) from all liability.

Section 2 - Driver Equipment

Helmet:

Every driver shall wear a protective helmet, which complies with these Rules and Australian Standards AS1698, while on the track area; which

- a) fits snugly on the head; and
- b) must be securely buckled when the driver is operating a vehicle on the track area
- c) If using a motor-cross style helmet, then goggles must be worn

But does not include hard hats, bicycle rider`s helmets or other safety equipment of a lesser quality

- d) If using a road bike helmet, visor must be down to protect the eyes

Clothing:

Every driver shall wear full body clothing, which is constructed of substantial material and which is of a one piece construction (one piece overalls), or in the case of a two piece outfit it shall be of motocross quality or better.

Drivers are recommended to wear body armour or adequate padding in addition to clothing. Juniors are required to wear body armour.

Drivers are required to wear motocross or leather gloves.

Every driver shall wear closed leather toe footwear of substantial construction and must cover ankles. Runners and footwear of lesser quality will not be permitted. Should leather toe footwear have laces, they **must** be taped for safety reasons.

Fire extinguisher:

Every team shall have a fully charged, correctly rated and current fire extinguisher Dry chemical powder or foam.

Section 3 - Pit and Track Areas:

Persons not permitted on grid:

No unauthorised person shall be permitted on the grid.

Hot works:

Hot works must be carried out in a designated area

Guest pit pass:

A guest pass is issued by a committee member. The guests must wear a fluro jacket to identify themselves whilst in the pit area.

Re-fueling

At any time fuel is being added to a mower;

- a) The driver must have dismounted the mower; and,
- b) The mower engine must be turned off; and,
- c) At any time fuel is being added to a mower, a correctly rated fire extinguisher must be in the hands of a capable person who is present for that purpose.

Pit Speed:

Mower pit speed is walking pace only

Pit Crew:

Each driver is allowed 1 pit crew who must sign and submit a release or indemnity in the prescribed form discharging VICMOW from all liability. The driver is responsible for the conduct of his/her guests and crew, even while on the race track.

No pets on pit or track area:

No pets are allowed at any time in the pit area or on the track area.

Smoking, alcohol and bad language:

There will be no smoking or consuming of alcohol in the pit or track areas at any time. Bad language will not be tolerated at any time.

Rubbish:

It is the responsibility of all members to ensure that all rubbish is removed from the pit area and spectator area prior to leaving the race venue.

Vehicles permitted on track area:

No vehicles other than race mowers or official vehicles such as tow vehicles or track maintenance vehicle shall be on or near the track area.

Track clean up:

VICMOW encourages all participants to help with the dismantling of the track at the end of each race meet.

Section 4 - Technical Inspections

Mowers must be approved for participation:

All mowers must be approved by the scrutineers prior to each event. All safety issues detected must be fixed before the mower is approved to race. Any non-safety fault detected will be recorded and must be rectified before the next race meeting.

Re-inspection may be conducted at any time:

At any time deemed necessary, the committee may require the driver to participate in a re-inspection of the mower before participation can continue.

Unsafe or unstable construction:

The Scrutineer may refuse any mower on the grounds of unsafe or unstable construction.

Re-inspection after an incident;

Any mowers involved in an accident must be re-inspected in the pit or track area by the Scrutineer before being able to resume racing.

Scrutineers to complete report of inspection:

The Scrutineer shall complete a Technical Inspection Report in the prescribed form, which declares the mower is either approved or temporarily not approved for participation.

Driver responsibility to designate correct mower classification:

It is the responsibility of the driver to correctly designate the engine type, size and event classification.

VICMOW reserves the right to reject at any times any mower or person, which in their opinion represents an attempt to defeat the spirit of these Rules, even though such mower complies with the letter of these Rules

Section 5 - General Provisions:

VICMOW

Compliance with the Rules:

Any VICMOW event conducted at any location must comply with these Rules

Briefings:

As VICMOW's commitment to safety, all drivers, pit crew and volunteers are required to attend all drivers' briefings. All drivers are to walk the track as a group even if you have walked it previously. Failure or refusal to attend will result in a refusal to race.

Bumping prohibited:

Repeated, deliberate or persistent bumping will not be tolerated. Incidents such as bumping, cutting racers off and other unsportsmanlike behaviors will be monitored by the track personnel and dealt with accordingly.

Responsibility for safe racing:

The responsibility for a safe race rests with all drivers. Care needs to be taken when overtaking or passing another mower. Completing a safe pass is the responsibility of the overtaking driver. No bumping will be tolerated.

Obedience to flags and lights:

The following flag signals will be obeyed without question—

A **GREEN** flag/light shall start or restart a race

A **YELLOW** flag/light indicates trouble ahead and drivers shall immediately reduce their speed and maintain their positions. Overtaking under these conditions is not permitted. Race will resume at next green flag.

A **RED** flag/light indicates that a dangerous condition exists and drivers must stop immediately when safe to do so. And when indicated, make their way back to the grid for a restart. Failure to stop will result in a black flag. .

A **BLACK** flag indicates a driver is alleged to have committed a serious breach or safety concern and the indicated driver is required to immediately pull to the infield when safe to do so and report to the Chief Steward at the end of the race.

A **WHITE** flag indicates one lap to go.

A **CHEQUERED** flag signifies race end.

Laps counted under a yellow or red flag/light:

Laps will be counted under a yellow flag/light.

After restart from a red flag/light, there will be a minimum of 2 laps to complete the heat. Drivers to line up in position order at time of stoppage.

Driver responsibility if mower leaves the track:

If a driver leaves the course he/she must re-enter the track as close to the same point the mower left the track as possible. Drivers must slow down immediately after exiting the track and must give way to oncoming mowers. Driver must not interfere with mower race line or speed. Drivers on re-entry must not gain any track position advantage.

VICMOW

Starter can authorise crew to enter track area:

Crew may not enter the track at any time during any race unless specifically directed to do so by the starter. Recovery vehicle may only enter the track area once the race has been completed.

Section 6 - Procedures:

Scoring:

Scoring shall be as such:

1st place = 4 points

2nd place = 3 points

3rd place = 2 points

4th place = 1 point.

Racers tied on points at the end of racing will have a shootout for placings.

Procedures for Protest during a race:

Any driver wishing to lodge a protest for any alleged incident or breach of race etiquette during the race is required to remain on his/her mower and not leave the track until such time as the protest has been acknowledged or determined by the chief steward, drivers advocate or committee and then can be instructed to leave the track area. Once decision determined, this will be final.

Procedures for Breach of the Rules:

A report of or allegation of a breach of these Rules will be dealt with in accordance with the provisions of VicMow rules.

Team Challenge:

A relay race designed to include junior drivers with the A, B and C classes, bringing all drivers together to compete in teams

Feature Race:

This includes top 4 in each of A, B and C classes, racing in handicapped grid positions or any other feature race format promoted/ decided by the committee

For safety reasons, any mower leaving the track during the feature race must stay off the track - this is to prevent any unsafe re-entry onto the track

VICMOW

Section 7 - Memberships:

A membership application must be completed and approved by the committee before you can race

1. Single racer \$80 18yrs & over
2. Junior racer \$50 under 18 and must be combined with at least an adult social member and must be accompanied by an adult
3. Social \$10
4. Family \$140 family consists of immediate family members up to age of 21. Non racing members will be considered social members
5. School \$80 consists of multiple drivers who must be enrolled with the school

Membership application must be received at least 2 weeks prior to a race meeting.

Membership applications may be completed by:

- a) Complete membership application form on VICMOW website at www.vicmow.com
- b) Contact secretary via email at secretary.vicmow@hotmail.com
- c) If no computer access, please phone secretary on 0402 846 411

The committee will consider your application and you will be notified of the committee`s decision

Once your membership has been approved by VicMow you will become an Associate member of VicMow for a minimum period of 12months, what this means:

Associate members have all the rights of a full member with the exclusion of voting rights

Members have the right to:

- (a) Receive notice of general meetings and of proposed special resolutions
- (b) Submit items of business for consideration at a general meeting; and
- (c) Attend and be heard at a general meeting

In line with the Associations Incorporation Reform Act 2012 any member under the age of 15yrs is considered an Associate member.

All Social Members will become Associate Social members, and those who have completed their probationary period, may hold an executive or committee position, and will then have a right to vote, only whilst on the committee.

Associate Memberships may be extended past the 12 month period if you have become a member and not attended any VicMow events or have breached any of the VicMow rules.

All Members must read and comply with ALL of the VicMow rules, including the Social Media Policy. A breach of any of these rules may see your Associate membership extended or suspended.

Any Acts or threats of violence or harassment be it physical, verbal or written will result in your Membership being revoked and a lifetime ban being put in place.

VICMOW

SECTION 8 - MOWER CONSTRUCTION RULES

Updated AUG 2018

Why do we have rules and Regulations???
We want to keep Mower Racing Safe and Good Cheap Family Fun.

Most other forms of motor sport have become unrestricted and racers spend a fortune on engine and chassis modifications and that puts it out of reach of many people. We are trying to keep Mower Racing as cheap as possible and stop it becoming cheque book racing where the teams with the biggest budget ALWAYS WIN.

It's all about keeping it as safe as possible and good clean fun. These beasts may not look that fast when you're watching them, but they really are quick and it's awesome fun doing around 75kph with your bum only a few inches off the dirt.

VICMOW strongly encourages new drivers to consult a committee member during the building process of the mower with any queries. Contact details for committee members are available on the VICMOW website.

Mower Construction:

These are the construction specifications in which each mower must adhere to. Use your own ideas and ingenuity to suit the type of mower you wish to modify. One of the first questions we are usually asked is, can I modify the engine and make it go faster. Most newcomers seem to think you need the fastest and most powerful engine to win races. Wrong...You need to step back a bit and re-think the whole scenario of racing ride on mowers, because until you have driven one of these beasts, you can't appreciate just how fast they really are. It's no good going fast if you can't steer, handle or stop. * Please put a lot of thought and work into your mower to ensure that it's built properly for your own safety.

The secret to going fast is in building a good competitive machine. Learning to drive it competitively and then honing your racing skills.

Eligible mowers:

Events are open to all mowers which comply with the provisions of these Rules.

"Junior modified class "J" means a ride on lawn mower which has been altered from the manufacturer's specifications in any structural or mechanical aspect.

VICMOW

110cc standard pit bike 4 stroke engine @4.6 kw/7500rpm only, FULLY AUTOMATIC, 14 tooth front and 37 tooth rear sprockets with a maximum rear tyre diameter of 410mm.

110cc standard pit bike 4 standard bike 4 stroke engine @ 4.6 kw/7500 rpm only or 125cc standard pit bike 4 stroke engine up to 5.7 kw/7500 rpm only, MANUAL, SEMI AUTOMATIC, must have a restricted gear set of 13 tooth front and 49 tooth rear with a maximum rear tyre diameter of 410mm, **Age: under 16yrs**

Juniors intent: To provide a fun and safe opportunity for the kids to demonstrate the driver's ability when in competition with essentially identical mowers. This is a highly regulated class to insure uniformity and safety between Junior machines. The intent is to have as mechanically identical mowers as possible so that Junior Drivers can gain experience and develop skills needed to advance to C Class when they become of age

“Super modified class “C” means a ride on lawn mower which has been altered from the manufacturer`s specifications in any structural or mechanical aspect and has been fitted with a motor size up to and including 200cc capacity – 4 stroke, single cylinder, carbureted, naturally aspirated only. Mowers meeting C Class rule can only run C Class. **Age: 16yrs and over**

“Super modified class “B” means a ride on lawn mower which has been altered from the manufacturer`s specifications in any structural or mechanical aspect and has been fitted with a motor size up to and including 250cc – 2/4 stroke, naturally aspirated, carbureted. **Age: 18yrs and over**

“Super modified class “A” means a ride on lawn mower which has been altered from the manufacturer`s specifications in any structural or mechanical aspect and has been fitted with a motor size between 251cc and up to and including 450cc – 2/4 stroke, naturally aspirated, carbureted. **Age: 18yrs and over**

* 2 strokes may be classed at Committee discretion

Technical inspection requirement:

1. Must pass a technical inspection before participation
2. Any mower deemed ineligible for participation must be re-inspected by the Scrutineer prior to participation in any race.

Mower to be readily recognized as a mower:

Mower must be built from an original ride on mower and be recognized as a commercially available domestic ride on lawn mower, and must retain as many original manufacturers body parts as possible. Any remanufacturing of body parts is to be the same specifications and materials as the manufacturer. Refabricating rear guards to cover tyres is recommended..

VICMOW

Please keep in mind

It must still look like a ride on mower that the public can relate with.

Motors and engines:

No forced induction systems such as turbo/supercharged or fuel injected engines are permitted. Only internal combustion engines naturally aspirated and carbureted, operated by any fuel permitted under the provisions of these Rules will be allowed.

Mower Blades:

Cutting deck to be removed

Chassis:

Modification of the original chassis is permitted, where such modifications may include lengthening or strengthening, or refabricate a chassis from a minimum of 50x25 x 2.5 RHS (50mm being the minimum height). All chassis must be made of mild steel only.

Nudge bars

Front nudge bars are not permitted

Bonnets

An original factory bonnet must be used.
Bonnets must be properly secured in a closed position.

Maximum width of mowers:

The maximum width of any mower shall be 1.0 metres (39") at the widest point.

Maximum length of mowers:

The maximum length of any mower shall be determined by the structural soundness of any lengthening processes.

Front Axle:

Non pivoting, securely attached to chassis

Rear Axle:

One piece, minimum 25mm in diameter, solid steel and securely mounted to chassis.

Suspension

Mowers shall not be fitted with any suspension to the front or the rear wheels.

Sharp or dangerous protrusions:

Mowers which have sharp or dangerous protrusions shall be deemed ineligible for participation until such sharp or dangerous protrusions have been made safe or removed.

Brakes:

Mowers must be fitted with an effective rear braking system only, which will slow both driving wheels simultaneously. "EG Hydraulic disc "No front brakes fitted at all.

Petrol Tanks:

Petrol tanks are to be constructed of an approved type; (no plastic bottles) and need to be secured and covered.

Fuel

Petroleum or gasoline products commonly referred to as; super, unleaded, lead replacement and premium unleaded are permitted fuels only.

Handlebars

Handlebars constructed of hollow tubing, which are fitted to a ride on lawn mower, shall be deemed unsafe unless the ends of the handlebars are solidly and securely blocked or plugged.

Steering mechanisms must be securely fitted.

Steering wheels are permitted.

Wheel Rims:

Wheel rims shall be of steel only and be of a one piece or welded construction. No two-piece rims are permitted.

Tyres: A,B & C Class

- a) Only rear tyres permitted are Carlisle Turf Tamers or Kenda Scorpions-
- b) Tractor type lugs are not permitted.
- c) All front tyres must have tubes

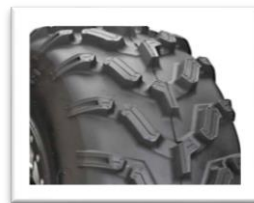
Any tyre which is different to above rule, must be approved by committee prior to purchase



Above types are

permitted

These types of tyres are not allowed



VICMOW

Footrest:

Footrests are to be made of steel or alloy and to have a non-slip surface. If the footrests have sides, then the sides must be filled in

Seat:

Seat must be securely and safely attached to mower. No Quad or motorbike seats.

Batteries:

Batteries shall be securely mounted.

Cut-off switch requirement:

All participating mowers shall be fitted with an operating commercially manufactured cut off switch which must be connected to the driver by means of a lanyard whenever the mower is being ridden.

Chains:

Guards must be covering exposed drive chains.

Headlights:

Glass headlights must be fully taped or removed.

Electric Gears:

Electric gear shifters are not permitted

Red dust light:

All mowers must have a RED DUST light fitted to the rear of the mower and must be operational with the ignition on. A mower without their own battery/charging system should use a bicycle style LED. Needs to be on whilst racing.

Race Numbers:

- a) Race numbers will be issued by the VICMOW Secretary
- b) Race numbers shall be clearly displayed on:
 - both sides with minimum 75mm in height
 - rear of mowers with minimum 100mm in height
- c) Race numbers shall be of a contrasting color to that of the mower.

If there is any doubt or ambiguity about any aspect of these rules, or anything you are not sure of, Don't Assume and Interpret your way. Please contact us by either email or phone for clarification
Bending or breaking of the rules is awkward for everyone involved
PLEASE DONT DO IT!!!!

Section 9 – VicMow Code of Conduct:

Part A: General Conduct

Code of Conduct:

The Victorian Mower Racing Association (VICMOW) expects its Committee, racers, social members, volunteers and guests to always act in a courteous, professional manner and any behaviour endangering the safety of others will not be tolerated.

VICMOW reserves the right to accept, deny, suspend or revoke the membership of any member, or place any member on probation, for any action(s) deemed detrimental to the sport of lawnmower racing or VICMOW. Any member under suspension, revocation or probation may be barred from participation in any VICMOW races, and any sanctioned and or affiliated events. Additionally, any person whose membership has been suspended or revoked may be barred from entry to any area at any race venue controlled by VICMOW. These areas include but are not limited to: the race track, pit area, and any area used for race administration purposes.

The driver is responsible for the conduct of his/her guests and crew, even while on the race track. Should anyone attending a VICMOW event be found committing any detrimental act, that person will be removed from the premises, and the member/driver will be held responsible for the conduct of their guest/crew member and further actions may be taken, including but not limited to disciplinary action, pit crew rights revoked or suspension or revocation of membership. Revocation, suspension or probation period of membership may be enacted without prior notice, and will be at the sole discretion of, and by majority agreement, of the VICMOW committee. Actions or conduct that may lead to suspension, revocation or probation include, but are not limited to:

1. A conscious effort by a member to ignore or circumvent in any way, VICMOW rules and or code of conduct as defined in the VICMOW rules.
2. Verbal assault, either public or written, of any VICMOW Committee, racing or social member, volunteer, or any other persons involved with VICMOW.
3. Physical assault of any VICMOW members, family members, official, volunteer, or pit crew, including starter and lap scorer.
4. Persistent on-track violations, including, but not limited to rough driving, passing under yellow, failure to stop under red flag, failure to follow on track instruction.
5. Any conscious effort to undermine the integrity of VICMOW, its members or volunteers.
6. Any conscious effort to undermine the ability of VICMOW, its committee, volunteers and fellow members to conduct their activities at any race venue hosting a VICMOW event.
7. Any disruptive behavior, which, in the opinion of track officials, committee members, members, volunteers or spectators, interferes with the orderly conduct of lawn mower races.

Intoxication:

No one shall be permitted to participate in any event, enter the pit area or enter the track area whilst affected or under the influence of alcohol.

Prohibited substances and drugs:

No illicit drug or prohibited substance shall be tolerated on the venue grounds at any time.

The possession and use of a prescribed medicine is acceptable, providing it is administered in accordance with the prescription by the person to whom the medicine is prescribed.

Part B: Social Media

Purpose:

Social Media has become an important tool to promote and to communicate to members and the community. Social media is not to be used at any time for personal comments which portray VicMow or its members in a negative way.

All adult members must remember at all times that junior members of VicMow may have access to social media and at all times be positive role models.

Respect, Integrity, transparency and honesty are at the heart of what we stand for and the key to our future success.

The social media code of conduct aims to provide specific guidance on best practice behaviour when using social media and to provide clear guidelines for VicMow members and non-members who do not comply with the code of conduct.

These guidelines also include the use of any personal social media directed to other members of VicMow.

THINK BEFORE YOU PRESS SEND

- Anything you say can be read by anyone, anywhere, at any time and the internet has a long memory.
- Always exercise good judgement when posting and be aware that inappropriate conduct can negatively affect VicMow and its members.

BE TRANSPARENT

- Do not post anything on behalf of someone else or be open and transparent that you are posting a comment on behalf of someone else.

BE FAIR and RESPECTFUL

- Always be respectful to other VicMow members and members of the wider community that you interact with on social media.
- Do not post comments that in any way may negatively impact on VicMow or its members
- The use of exaggeration, bad language, derogatory comments or the use of other members personal information will not be tolerated
- Do not post comments that are obscene, defamatory, threatening or discriminatory to an individual or VicMow
- The association will not tolerate bullying, harassment or threatening behaviour, which includes the following
 - Sending an individual harassing calls, texts or emails
 - Posting derogatory or humiliating comments about any individual or VicMow, whether directly or indirectly

VICMOW

BE SMART

- Respect other peoples intellectual property. It is best practice to assume that all content online is protected by copyright.
- Respect Privacy laws, spam act, copyright laws and any other applicable laws
- Respect confidentiality at all times. Do not disclose any information which is confidential, including personal information of another person

BE RESPONSIBLE

- VicMow expects all members to conduct themselves in certain ways, both at race meetings and as part of the community. It is also the member's responsibility to make sure members of his/her family and any personal visitors understand and conduct themselves according to any special requirements as part of their life in the communities.
- Always respecting the customs and beliefs of all VicMow members
- VicMow members will recognize and contribute to service to the community
- VicMow members must follow the rules and comply with any relevant legislative requirements.
- VicMow members will act to prevent practices that are inhumane or discriminatory against any person or groups of people.
- VicMow members will disclose any potential or actual conflicts of interest. This could be:
 1. Personal beliefs or attitudes that influence the impartiality of advice given.
 2. Personal relationships with anyone that influence the impartiality of themselves or other members
- VicMow will discipline members that fail to meet the acceptable codes of conduct

DISCIPLINARY PROCESS FOR MISUSE of SOCIAL MEDIA

Breaches of this policy may see your Associate membership extended or membership suspended. Any threats of physical violence or harassment will result in your membership being revoked and a lifetime ban put in place

VICMOW Club Member of the Year

Election Criteria

In the past 12 months, this person must have;

1. Upheld the values of VICMOW and acted within the rules at all times
2. Gone over and above what is expected of them.
3. Shown leadership and volunteered to help when needed
4. Must be a financial member of VICMOW.

The club member of the Year is selected by the current Club member of the year and President

It is presented at the Annual General Meeting

VICMOW

FINALLY

If there is any doubt or ambiguity about any aspect of these rules, or any thing you're not sure of, please contact the Secretary by email or phone for clarification.

The spirit of fun and friendly competition is to be maintained at all times
Bending or breaking the rules makes it awkward for everyone
Please don't do it..

Let us all remember that we should strive to maintain professionalism in our appearance and conduct, our aim is to keep participation fun, affordable, safe and competitive. For those who wish to spend time seeking loopholes in the rules, or defeat the spirit of the rules; we suggest you are racing in the wrong organisation.

WARNING LAWN MOWER RACING IS DANGEROUS. RACING SHOULD ONLY BE DONE IN A CONTROLLED ENVIRONMENT WITH PROPER SAFETY PRECAUTIONS. EVEN WITH SAFETY PRECAUTIONS IN PLACE THERE IS AN INHERENT DANGER AND SIGNIFICANT RISK OF PERSONAL INJURY OR DEATH INVOLVED WITH MOTORSPORTS. ANYONE PARTICIPATING AND SPECTATING IN LAWN MOWER RACING ASSUMES THIS RISK. VICMOW WILL NOT BE RESPONSIBLE FOR ANY INJURIES OR DAMAGES TO EITHER PERSONS OR PROPERTY, INCURRED FROM PARTICIPATING OR SPECTATING IN LAWN MOWER RACING ACTIVITIES.

THE PIT AREA AND TRACK AREA AT RACE EVENTS ARE POTENTIALLY HAZARDOUS. SIGNED WAIVERS ARE REQUIRED FOR ANYONE ENTERING THE PIT OR TRACK AREA. VICMOW WILL NOT BE RESPONSIBLE FOR ANY INJURIES INCURRED. PLEASE BE ALERT TO YOUR SURROUNDINGS AND TAKE EVERY PRECAUTION POSSIBLE.